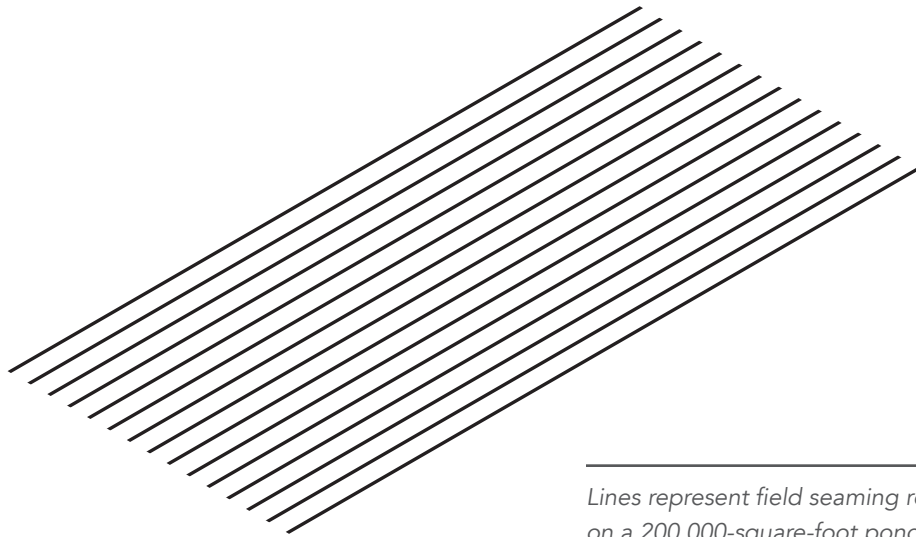


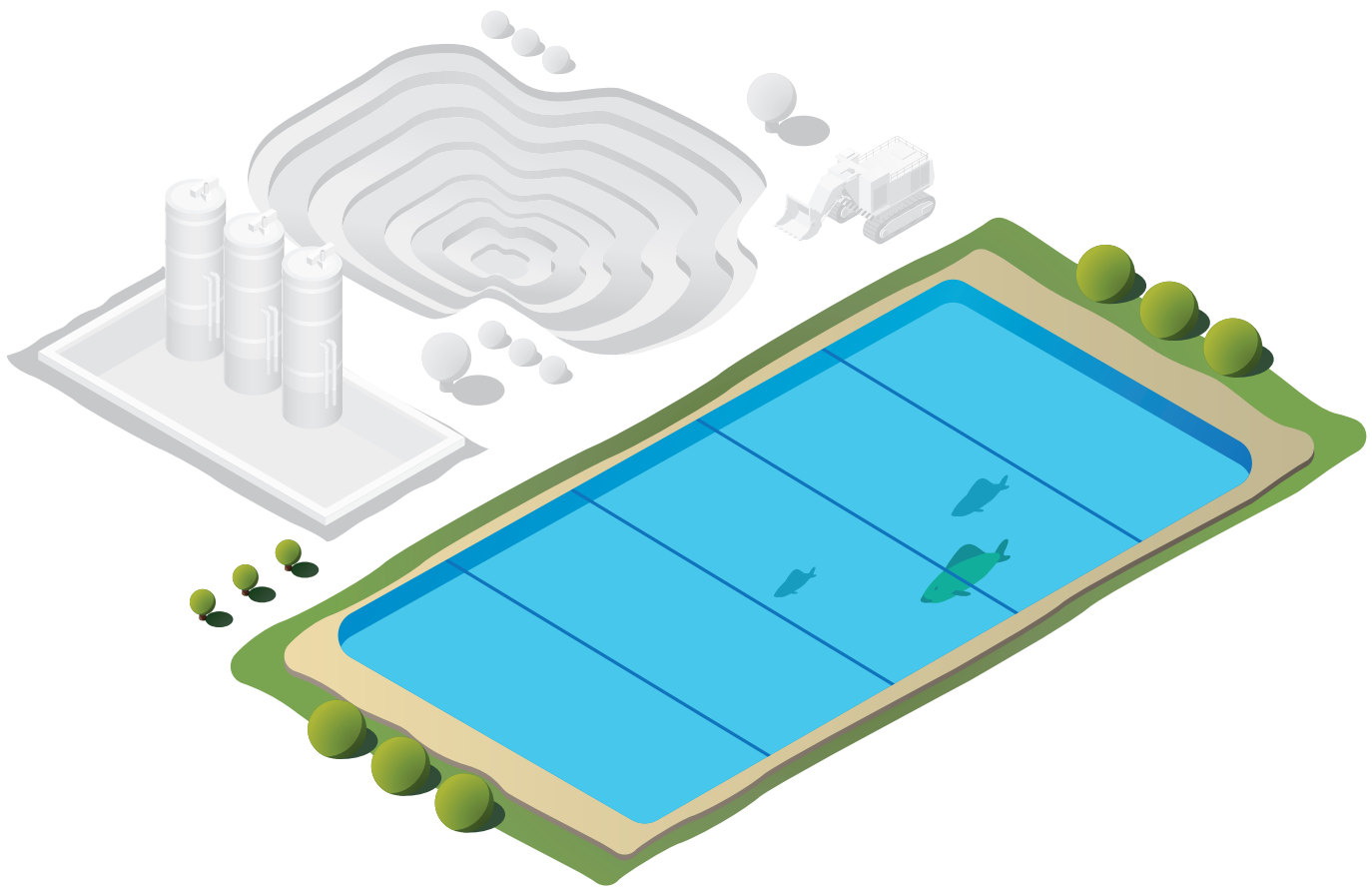
Traditional containment installations require an extensive amount of strenuous on-site labor. The diagram below shows a standard 200,000-square-foot pond application, pieced together with 20-foot rolled HDPE or EPDM. This type of installation requires nearly 10,000 linear feet of seaming in the field.

Alternatively, in addition to traditional rolled goods, Plastatech® geomembranes are ideal for custom prefabrication into 80 by 100 foot panels by fabrication specialists which eliminates a large portion of the on-site labor required for seaming.



Lines represent field seaming required on a 200,000-square-foot pond using a standard 20-foot rolled HDPE or EPDM.

The Advantages of Precision Fabrication



The extended dimensions of Plastatech PVC geomembranes require only 3,500 linear feet of jobsite seaming to complete this same 200,000-square-foot pond installation. Through the fabricators' ability to customize the dimensions of Plastatech geomembranes, installation time is dramatically reduced while jobsite efficiency is increased.

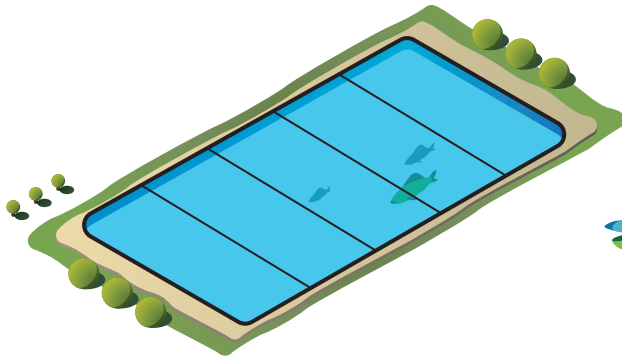


Plastatech[®]
Membranes, Fabrics, and Film Solutions

Contain. Control. Comply.

The Plastatech Difference

The below diagrams outline how Plastatech geomembranes can help improve installation efficiency on the most common containment applications.

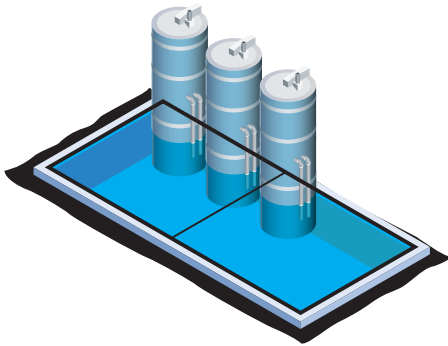


200,000-ft² Pond

- 20-ft wide roll HDPE
Linear feet of field seams: **9,500**
- 50-ft wide roll EPDM
Linear feet of field seams: **3,500**



5 Plastatech® 40,000-ft² sheets
Linear feet of field seams: **1,600**

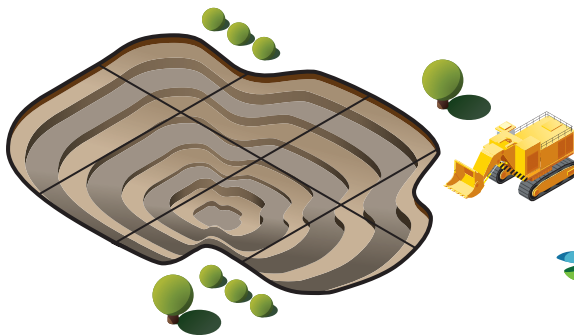


75,000-ft² Secondary Containment Area

- 20-ft wide roll HDPE
Linear feet of field seams: **3,500**
- 50-ft wide roll EPDM
Linear feet of field seams: **1,000**



2 Plastatech® 40,000-ft² sheets
Linear feet of field seams: **150**



300,000-ft² Small Landfill

- 20-ft wide roll HDPE
Linear feet of field seams: **14,500**
- 50-ft wide roll EPDM
Linear feet of field seams: **5,400**



8 Plastatech® 40,000-ft² sheets
Linear feet of field seams: **2,100**

To learn more about Plastatech laminated PVC geomembranes, contact us at:

800-892-9358
plastatech.com



Plastatech Engineering, Ltd.
725 West Morley Drive | Saginaw, Michigan 48601
800-892-9358 phone | (989) 754-1626 fax | plastatech.com

Plastatech is a registered trademark of Plastatech Engineering, Ltd.
©2017 Plastatech Engineering, Ltd. All rights reserved.
Plastatech Overlay Sheet ORIG: 11.10.17 – PL080009